

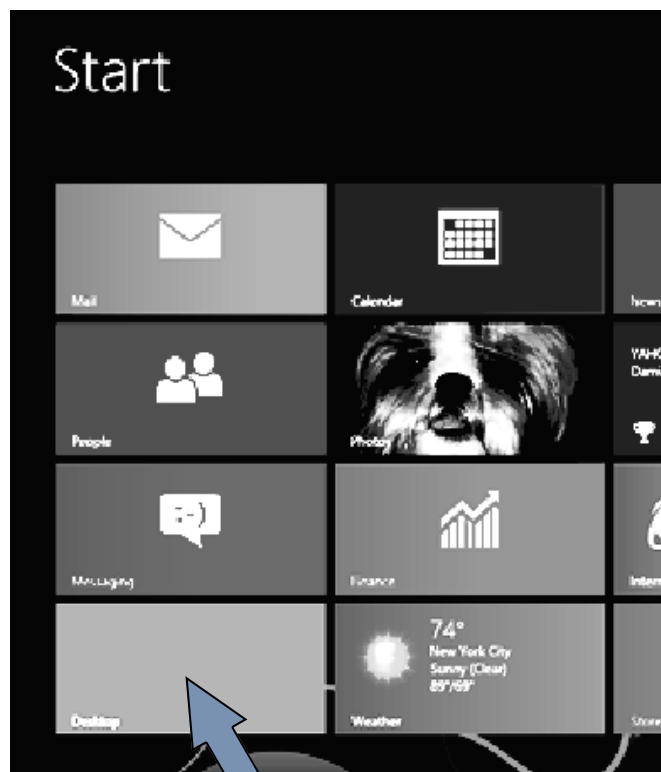


Instrucciones de Configuración de Acceso a la Red Inalámbrica de la PUCPR



Oficina de Telecomunicaciones y Tecnología de la Información
Pontificia Universidad Católica de Puerto Rico
Teléfono: 787-841-2000 ext. 1951

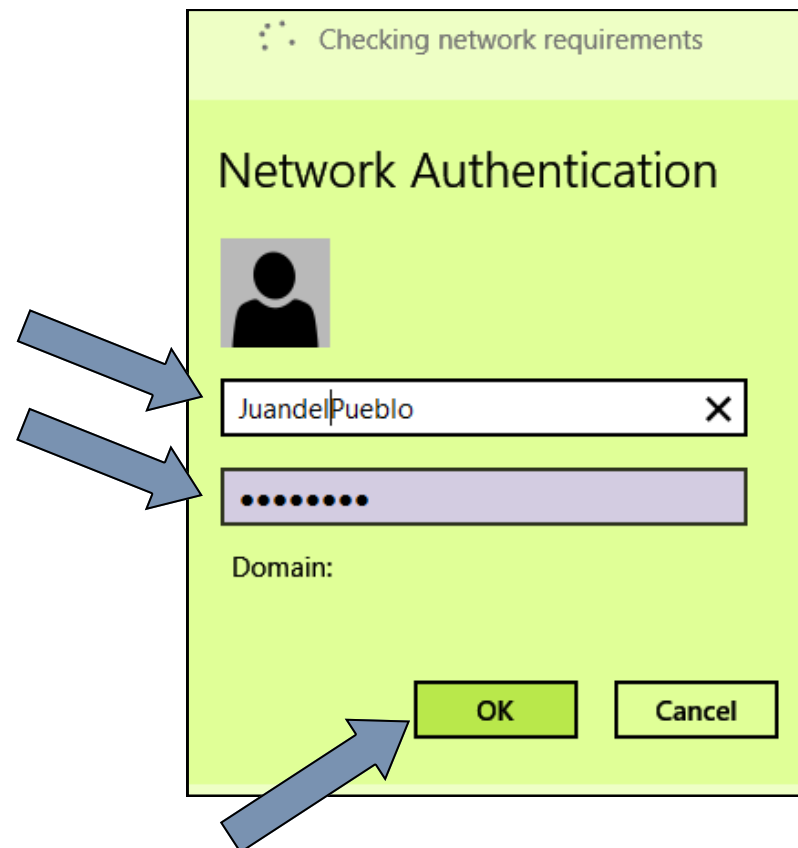
Paso 1



En la pantalla principal seleccionar el ícono de **"DESKTOP"** o **"ESCRITORIO"**.

Paso 19

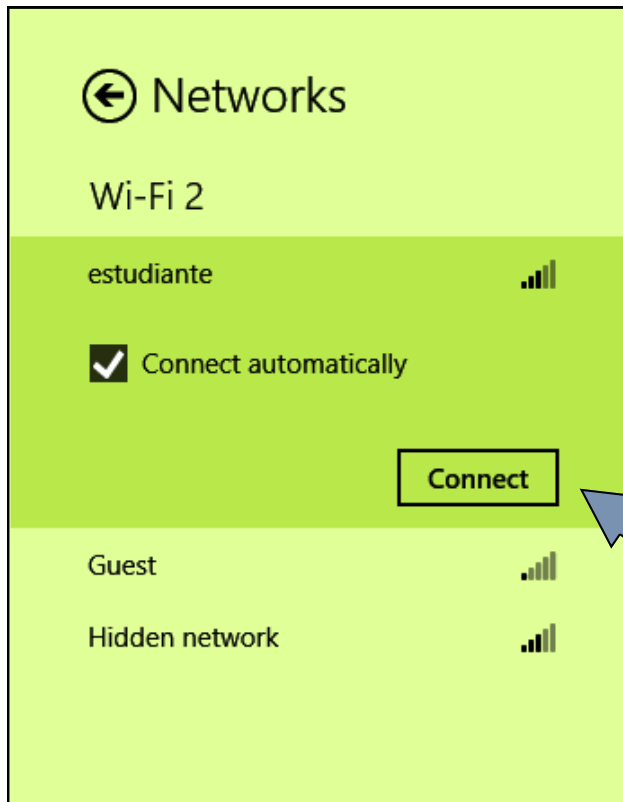
Entrar su **NOMBRE DE USUARIO** y **CONTRASEÑA** (los mismos que utiliza para entrar a las computadoras de los laboratorios) en los encasillados correspondientes.



Oprimir el botón de **"OK"**.
Esperar que muestre que esta conectado.

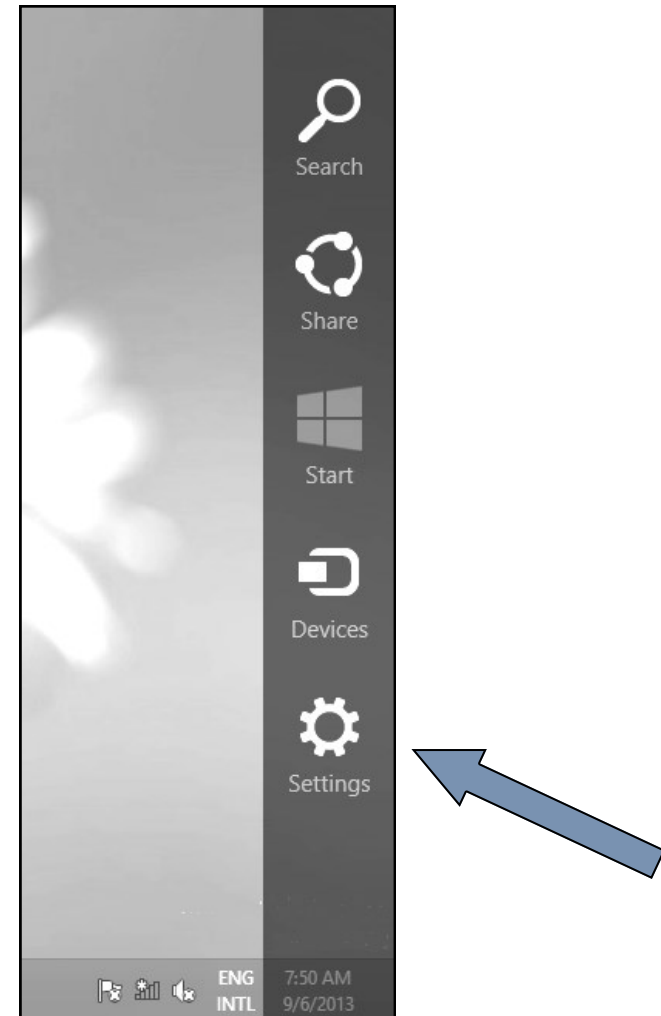
"Final"

Paso 18



Oprimir el botón de **"CONNECT"**.

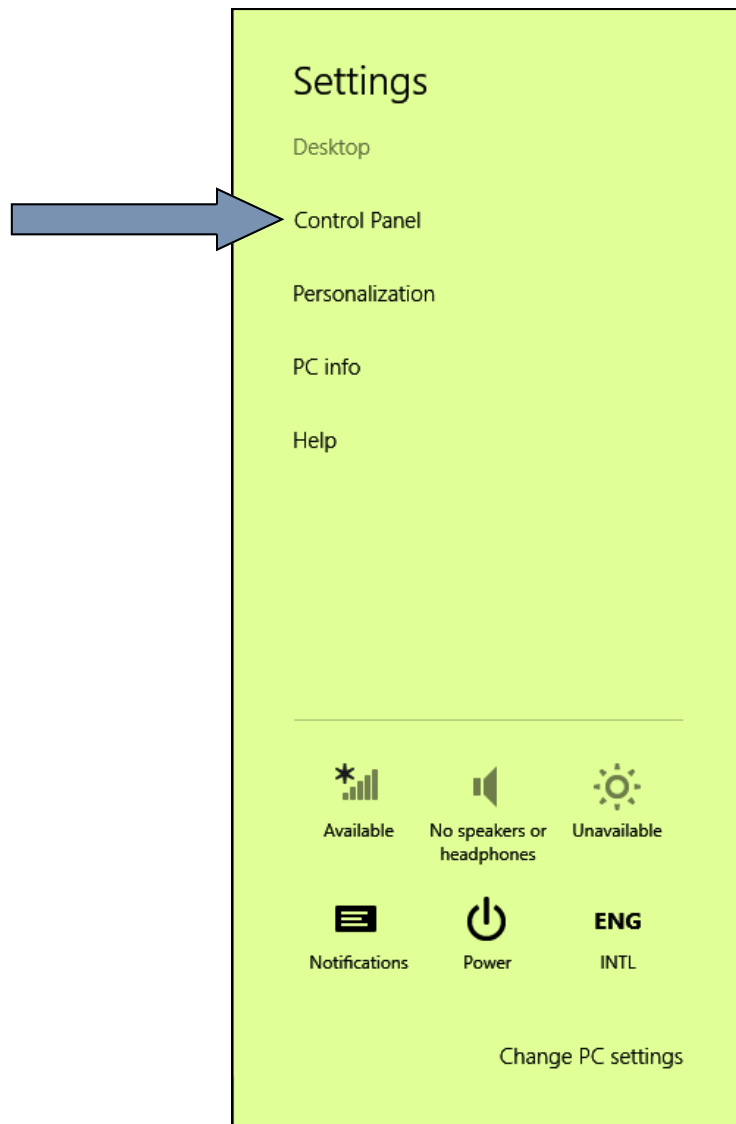
Paso 2



Entrar al menú lateral derecha y seleccionar **"SETTINGS"**

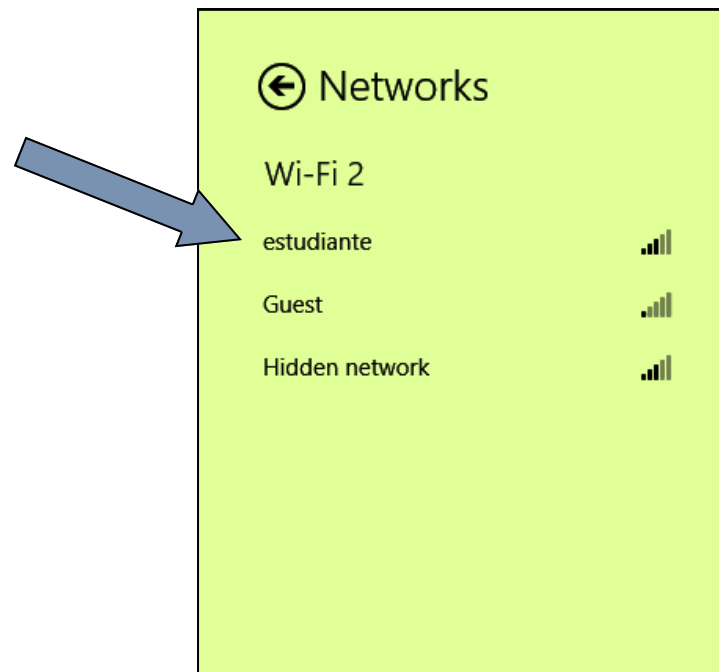
Paso 3

Seleccionar **"Control Panel"**

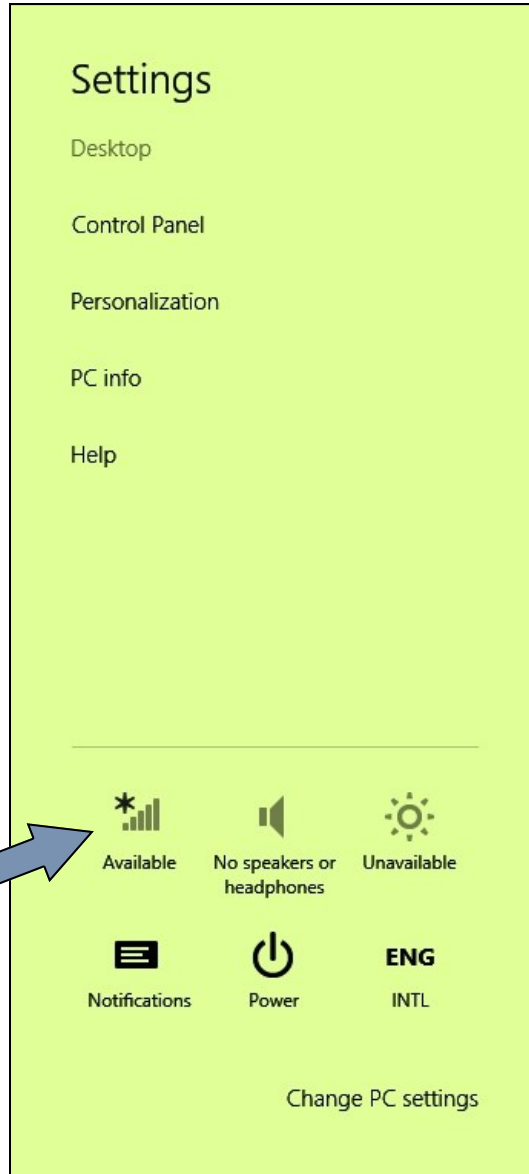


Paso 17

Entrar al menú lateral derecha y seleccionar **"SETTINGS"**



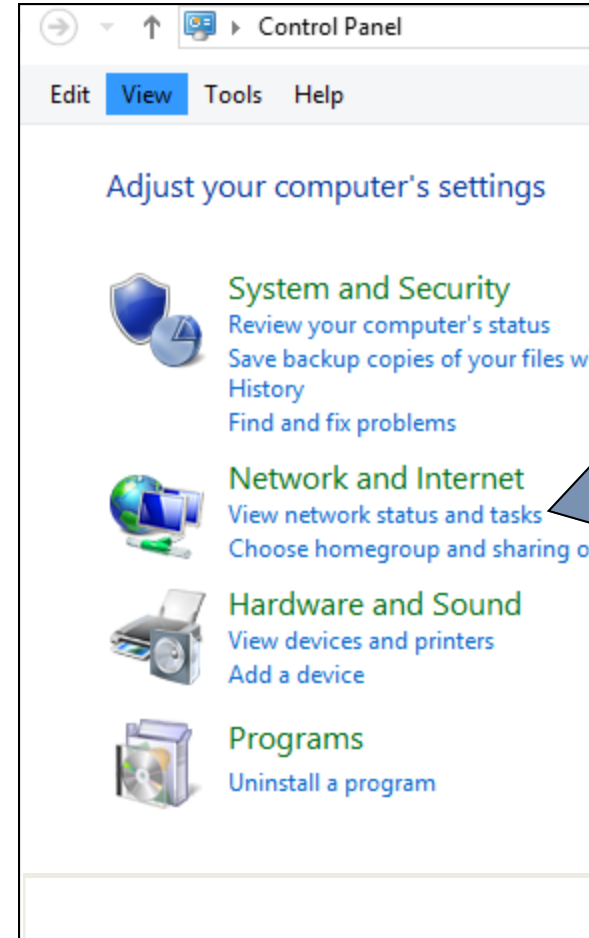
Paso 16



Entrar al menú lateral derecha y seleccionar **"SETTINGS"**

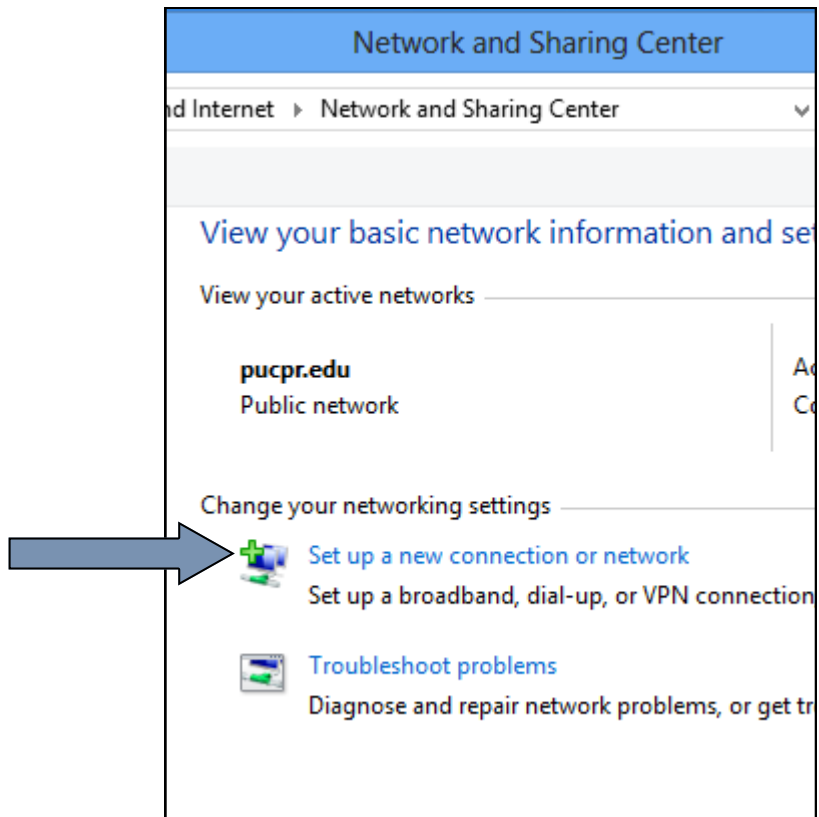
Paso 4

En el ventanilla de "Control Panel" seleccionar **"View Network Status and Tasks"**

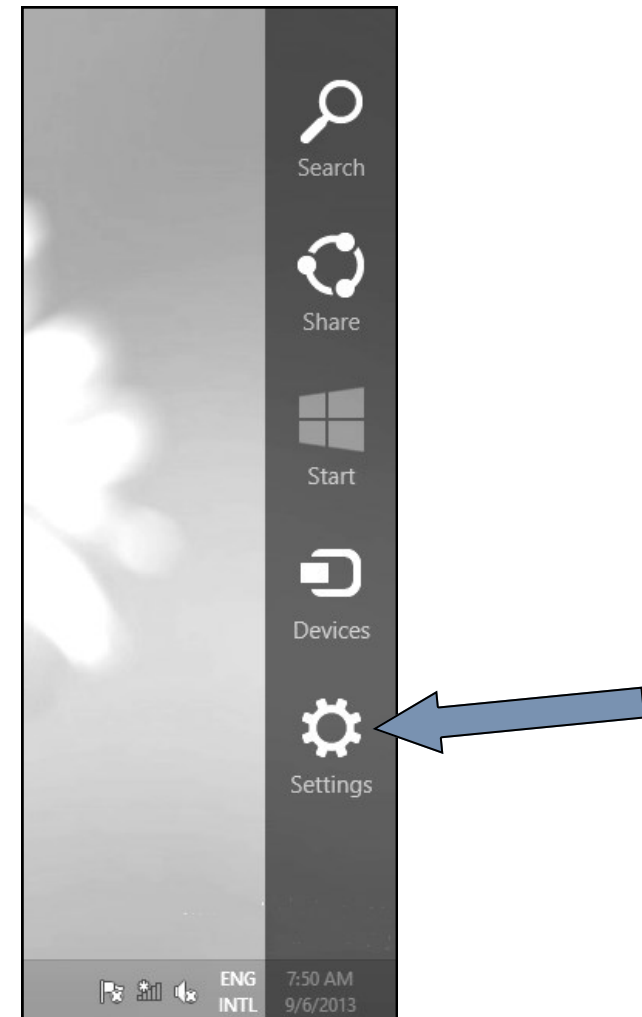


Paso 5

En la ventanilla de "Network and Sharing Center"
seleccionar "**Set up a new connection or
Network**"

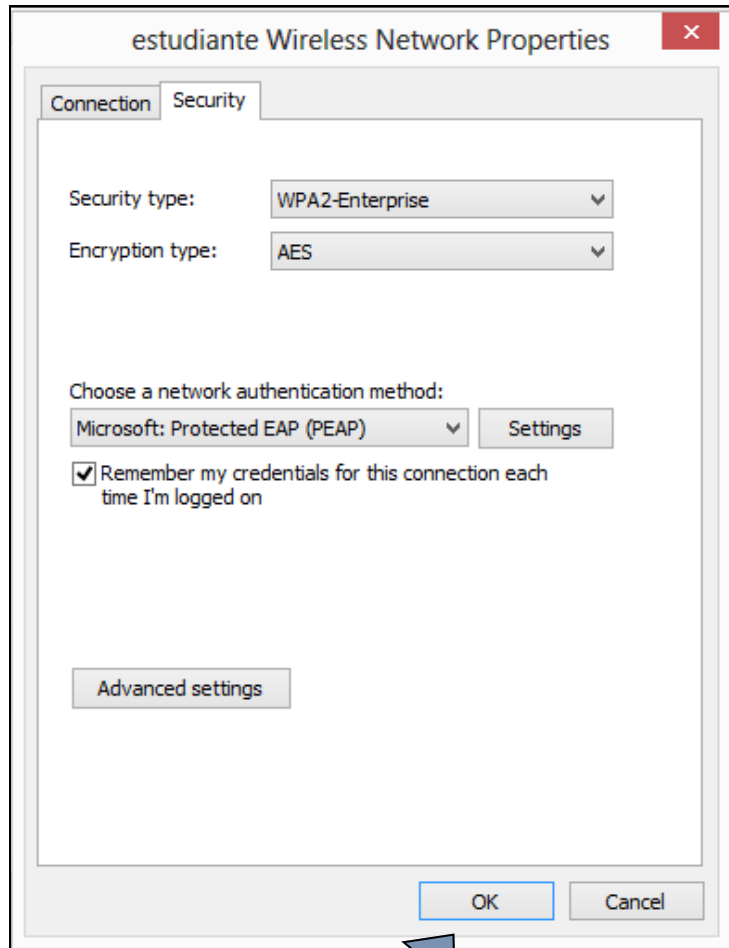


Paso 15



Volver a entrar al menú lateral derecha y seleccionar "**SETTINGS**"

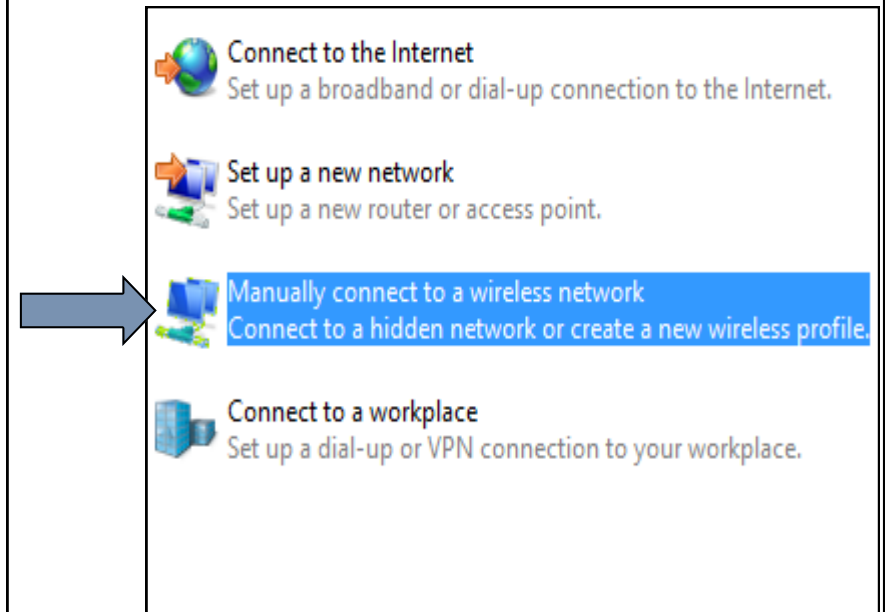
Paso 14



Terminar la configuración oprimiendo el botón **"OK"** en todas las ventanas abiertas.

Paso 6

En el ventanilla de "Set up a new connection or Network" seleccionar **"Manually connect to a wireless network"**



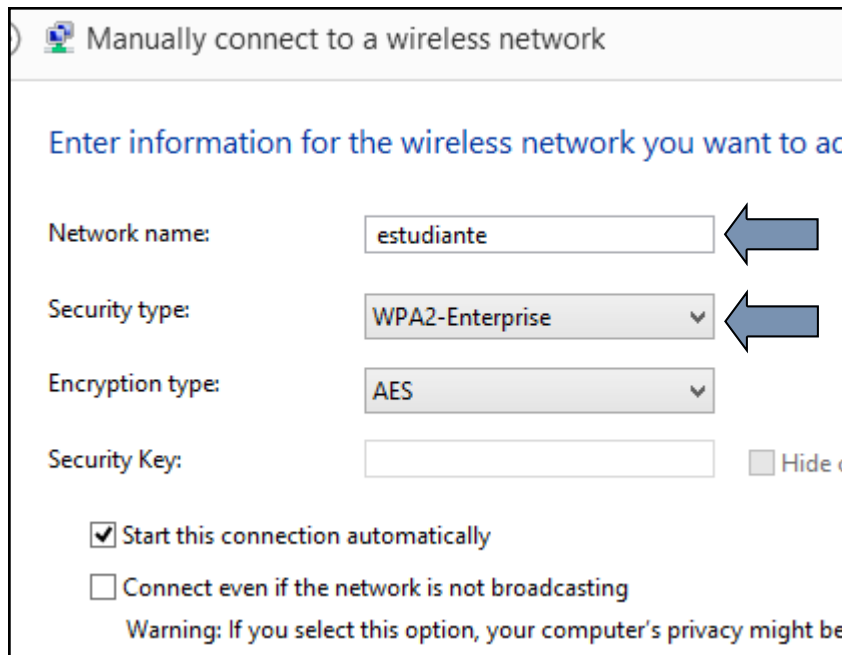
Paso 7

En la ventanilla "Manually connect to a wireless network" **llenar solamente** los siguientes encasillados:

Network Name : **estudiante**

Security Type: **WPA2-Enterprise**

Luego seleccionar **Next**.



Manually connect to a wireless network

Enter information for the wireless network you want to add

Network name:

Security type:

Encryption type:

Security Key: Hide

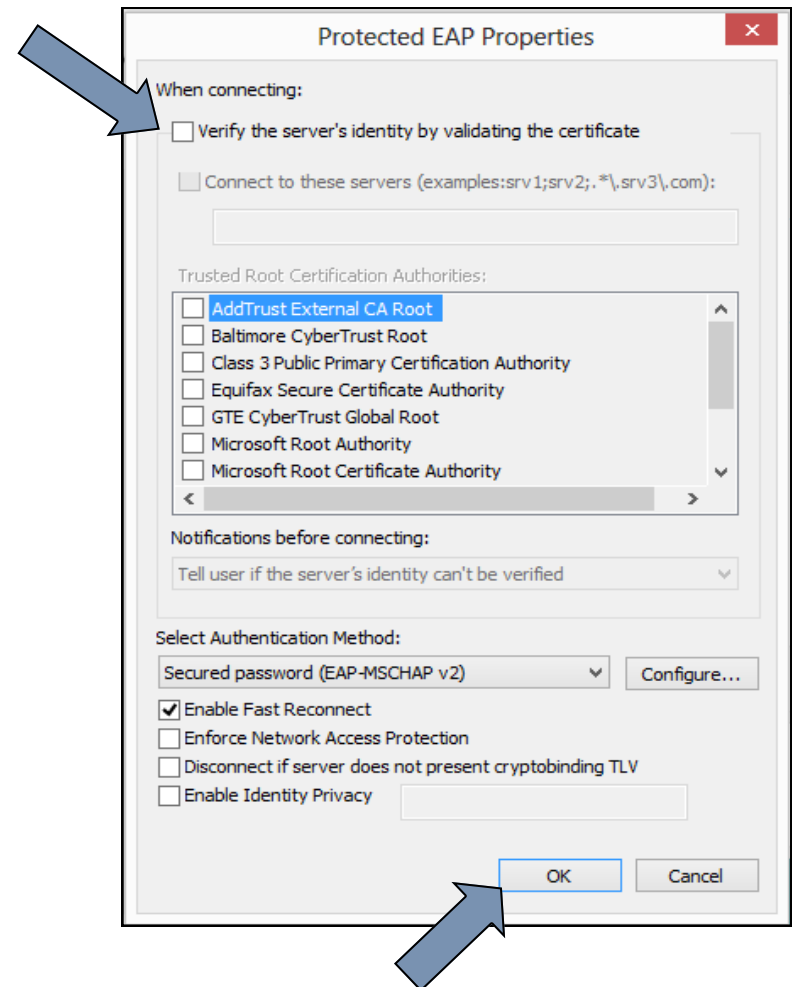
Start this connection automatically

Connect even if the network is not broadcasting

Warning: If you select this option, your computer's privacy might be affected.

Paso 13

Remover marca de cotejo en la selección "Verify the Server's identity by validating the certificate"



Protected EAP Properties

When connecting:

Verify the server's identity by validating the certificate

Connect to these servers (examples: srv1;srv2; *\\,srv3\,com):

Trusted Root Certification Authorities:

- AddTrust External CA Root
- Baltimore CyberTrust Root
- Class 3 Public Primary Certification Authority
- Equifax Secure Certificate Authority
- GTE CyberTrust Global Root
- Microsoft Root Authority
- Microsoft Root Certificate Authority

Notifications before connecting:

Tell user if the server's identity can't be verified

Select Authentication Method:

Secured password (EAP-MSCHAP v2)

Enable Fast Reconnect

Enforce Network Access Protection

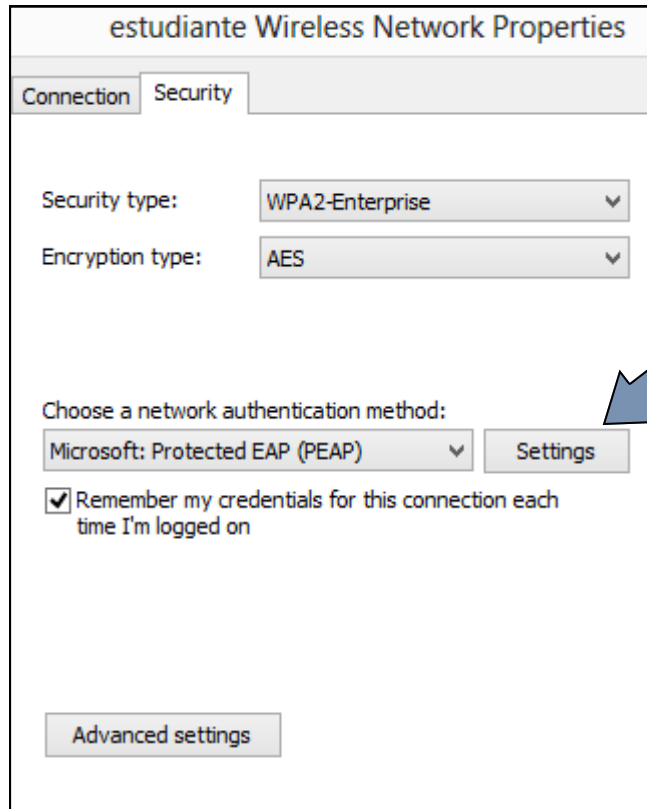
Disconnect if server does not present cryptobinding TLV

Enable Identity Privacy

Luego oprimir del boton de "OK".

Paso 12

En esta ventanilla seleccionar el botón de **"Settings"**



estudiante Wireless Network Properties

Connection Security

Security type: WPA2-Enterprise

Encryption type: AES

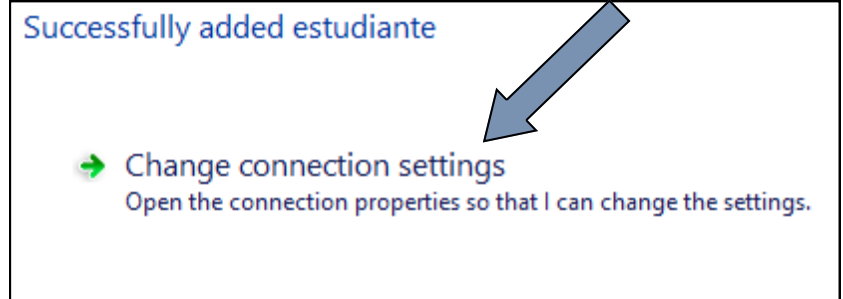
Choose a network authentication method:
Microsoft: Protected EAP (PEAP) Settings

Remember my credentials for this connection each time I'm logged on

Advanced settings

Paso 8

En la siguiente ventanilla seleccionar **"Change connection settings"**

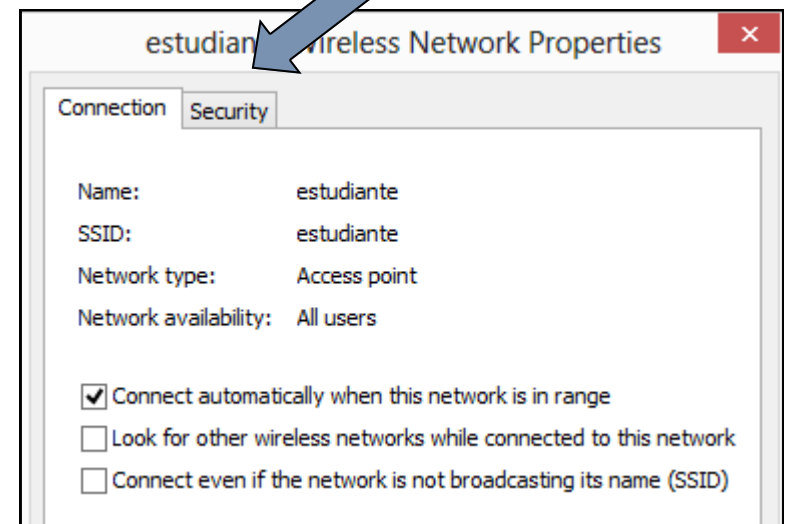


Successfully added estudiante

→ Change connection settings
Open the connection properties so that I can change the settings.

Paso 9

En la siguiente ventanilla seleccionar **"Security"**



estudiante Wireless Network Properties

Connection Security

Name: estudiante

SSID: estudiante

Network type: Access point

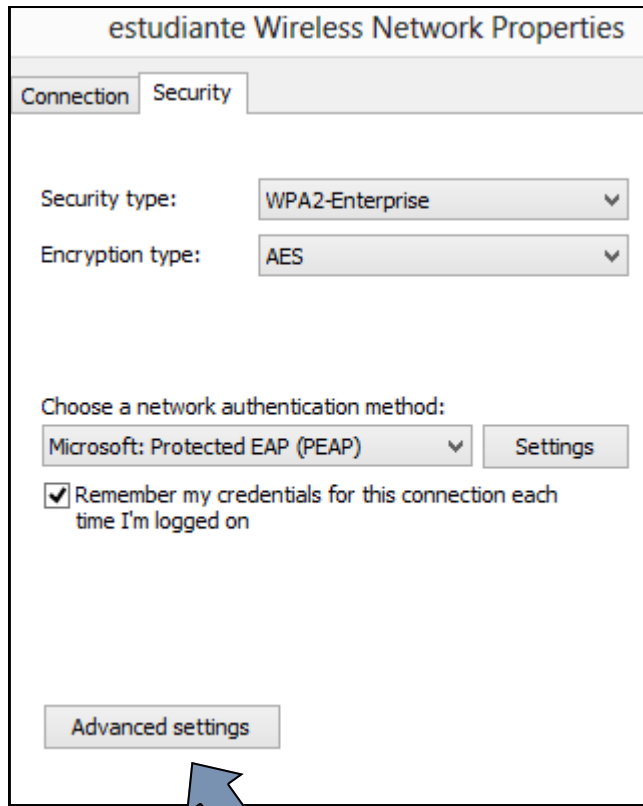
Network availability: All users

Connect automatically when this network is in range

Look for other wireless networks while connected to this network

Connect even if the network is not broadcasting its name (SSID)

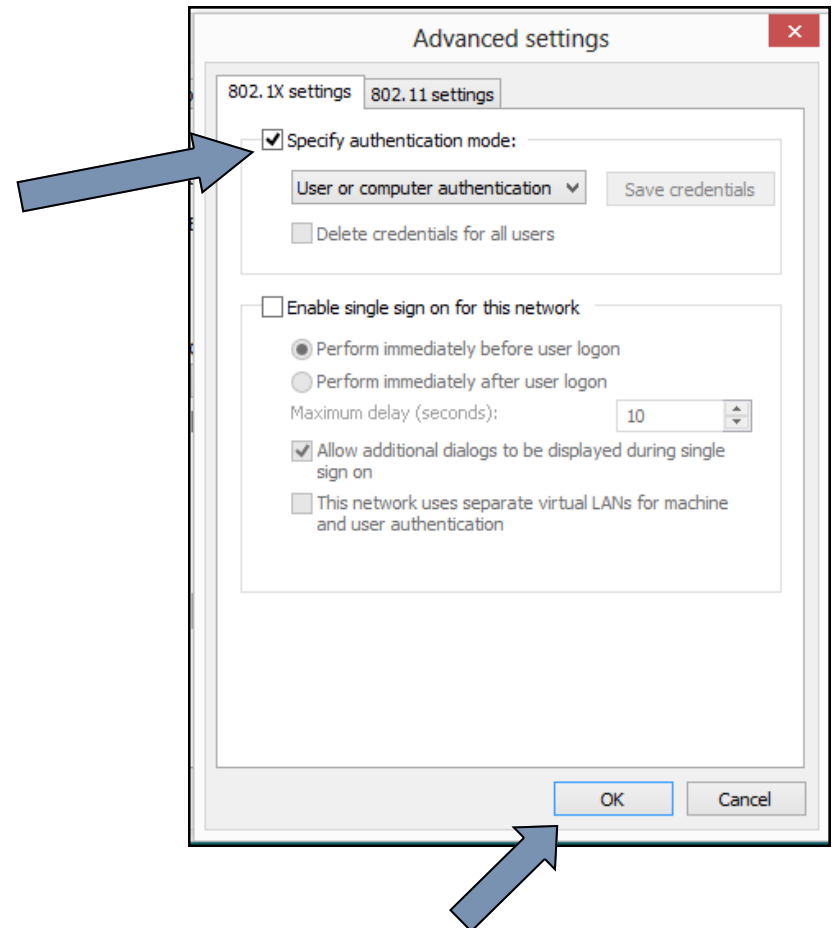
Paso 10



En la ventanilla "Security" seleccionar el botón de **"Advance settings"**

Paso 11

En la ventanilla "Advance settings" hacer una **marca de cotejo** o **"check mark"** en la opción de **"Specify authentication mode"**



Luego oprimir del botón de **"OK"**.